



Howard Industries, Inc.
Certified to ISO 9001:2015

Catalog Section

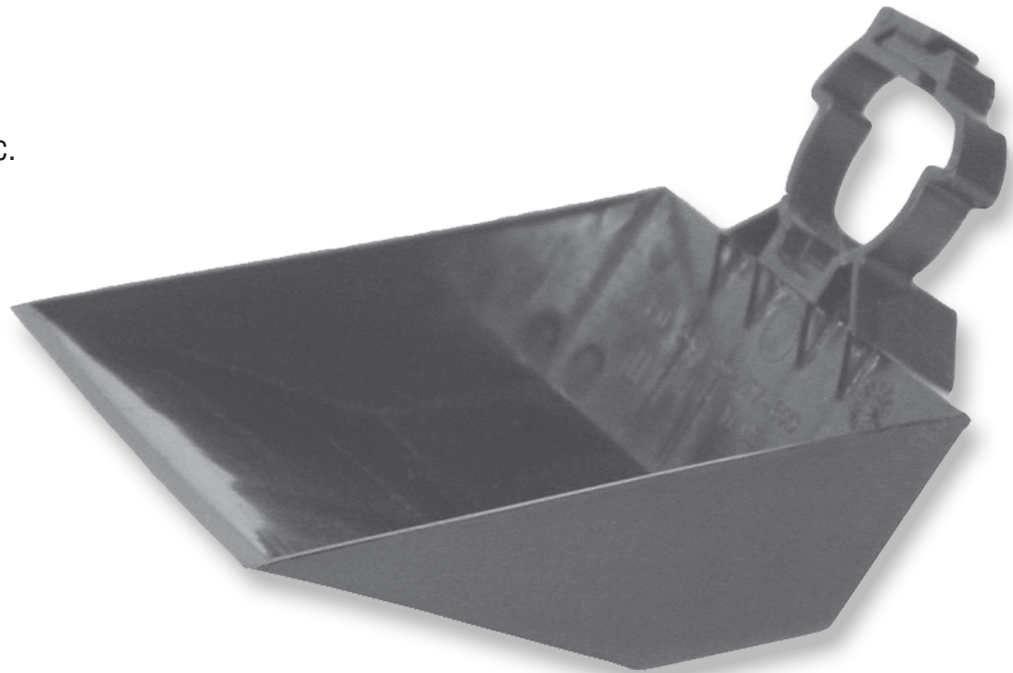
61-10

Drip Guard

For Draw-Out Expulsion Fuse Holders



Howard Industries, Inc.
ISO 9001:2015
10002179



The Howard Industries Drip Guard is intended for use with sidewall mounted draw-out expulsion fuse holders to prevent transformer fluid from dripping onto the ground or coming into contact with rubber connector components, arresters, and cable when the fuse is removed. The design includes a large capacity cup to retain dripped fluid.

The Drip Guard is compatible with virtually all brands of fuse holders currently found in the industry and

is easily attached by use of a serrated-tooth locking mechanism. The locking mechanism mounts the Drip Guard firmly on the fuse holder, preventing the guard from rotating or being dislodged during routine use, yet permits removal by hand when necessary.

The Drip Guard is made from an ultraviolet-stabilized co-polymer polypropylene compound that is highly resistant to deterioration from the effects of heat and transformer fluids typically found inside

the terminating compartments of pad-mounted transformers. Refer to the reverse for installation notes, dimensional information, and an illustration of a typical Drip Guard installation.

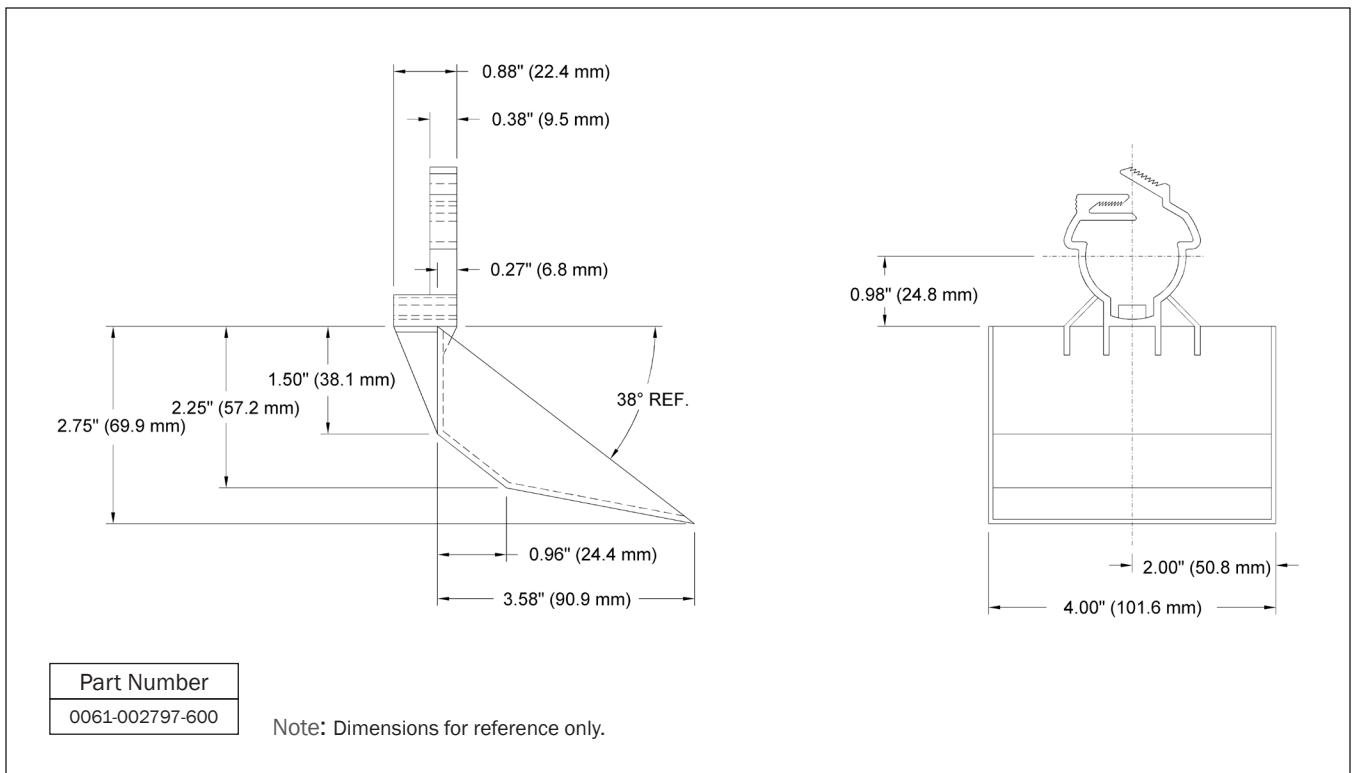


Figure 1: Drip Guard for draw-out expulsion fuse holder.



Figure 1: Drip Guard installed in a single-phase pad-mounted transformer.

Installation Notes

1. Place Drip Guard's clamping ring around the fuse holder, just behind the fuse holder handle. Make sure the alignment features molded into the clamping ring align properly with the mating surfaces of the fuse holder. The retaining cup should be positioned directly underneath the fuse holder opening.
2. Insert the Drip Guard's toothed latching tab into the opposite side of the clamping ring
3. Squeeze the latch together by hand until the Drip Guard is tightly secured on the fuse holder.

Removal

To remove the Drip Guard, pry the latching mechanism apart slightly and withdraw the toothed latching tab.